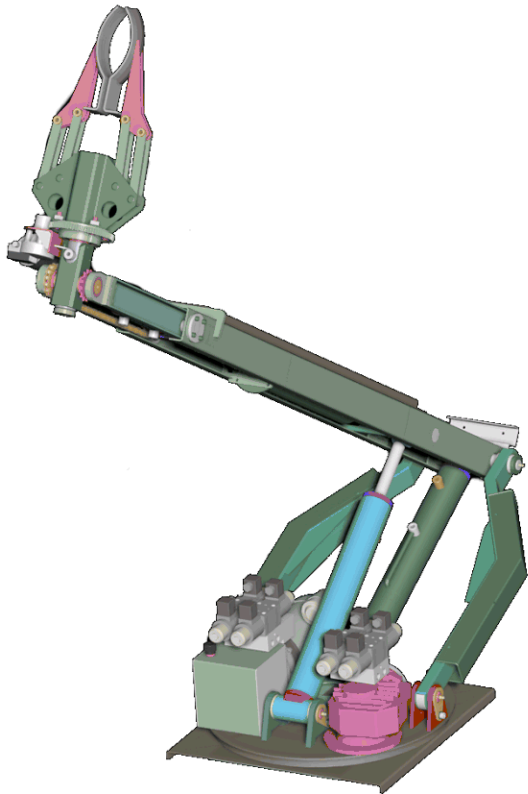


Telecontrol Robot TR 2

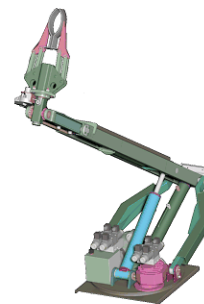


The Robot TR 2 is a Remote controlled mobile robot for investigation and for the remote handling of improvised explosives devices, EOD, and other hazardous situations. It is an all-purpose, battery operated vehicle used by Police, Military and Chemical Industry.

Eight levels off freedom in addition with the arm extension gives the user a wide range of applications. Especially the high elevation and the possibility to pick up things under the footprint of the Robot TR 2, paired with a load capability from maximum 80 Kg make this system all-purpose.

The remote control is very easy to handle and separated from the monitor, a strong transmitting system for the remote and video signal permits a range from up to 300 m. The 14" LCD monitor gives the user a brilliant picture. The Robot TR 2 works with full charged batteries more than two hours.

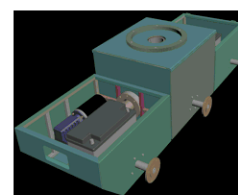
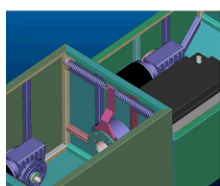




Technical Specifications TR 2

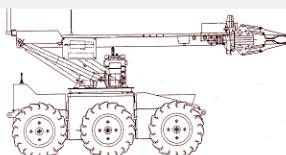
Arm

flexibility	eight levels of freedom
pincer	unlimited rotation in both directions
turret swivel	+ / - 360 degrees
load and transp. cap.	80 kg in front and back direction, 30 kg over the side
max. high	3200 mm at full arm extension
max. depth	900 mm below footprint
arm extension	250 mm
power system	hydraulics and servo engines
cameras	CCD colour cameras for arm and pincer
light	two dual LED spotlights



Body

assembling	three sectional, to each other 6° twistable
power transmission	six wheel drive with one electric motor for each tire
tires	pneumatic
drive speed	0 – 6 Km/h infinitely variable
length	1900 mm over all (incl. arm)
wide	720 mm over all (incl. arm)
height	950 mm over all (incl. arm)
driving control system	two CCD colour cameras for forward and backward driving



Miscellaneous

Battery	24V 200Ah
Charger	220 ~ 240 V, 50 ~ 60 Hz fast charger
Weight	depending on equipment components 280Kg – 350Kg

Optional Accessories

Zoom and infrared CCD Cameras

different types of pincer claws

retainer for water disruptor and shotgun

Anti-glare shield for the monitor

Customized versions available